

# Source 2



We see a future in which smart Home Energy Management Systems play a big role. A dynamic future where you are in the driver's seat of how you use your electricity to maximise efficiency and minimise cost.



## Ready for the future

With Source 2, you have the technology to prepare you for the future. Equipped with industry-leading smart charging technology, Source 2 can balance available solar power with grid power to ensure the most efficient way to charge your vehicle. In addition, Source 2 can be linked with the smartest Energy Management algorithms in the world.

## Explore Source 2

### Compatible with any EV

Source 2 is compatible with any electric vehicle and charges effortlessly either through an integrated charging cable or a socket.

### Cloud Proxy

Source 2 is connected to the Volt Time Cloud via an OCPP proxy server, which connects the charger to one or multiple backoffice systems of your choosing. This enables Freedom of Choice and Freedom to Leave. Let your chargers communicate in any OCPP version, as well as MQTT and Matter.

### Dynamic modes

Benefit from dynamic charging modes such as load balancing or solar balancing to maximise charging speeds and minimise cost.

### Built in the Netherlands

Source 2 is built entirely in the Netherlands and is tested to ensure the highest quality.

### Fast Charging

Charge as fast as possible at up to 22 kW. Most cars are fully charged within two hours!

### Premium interface

With a User app, Installer app and free Volt Time Cloud connection, you are ready for the ultimate of configuration and management ease.

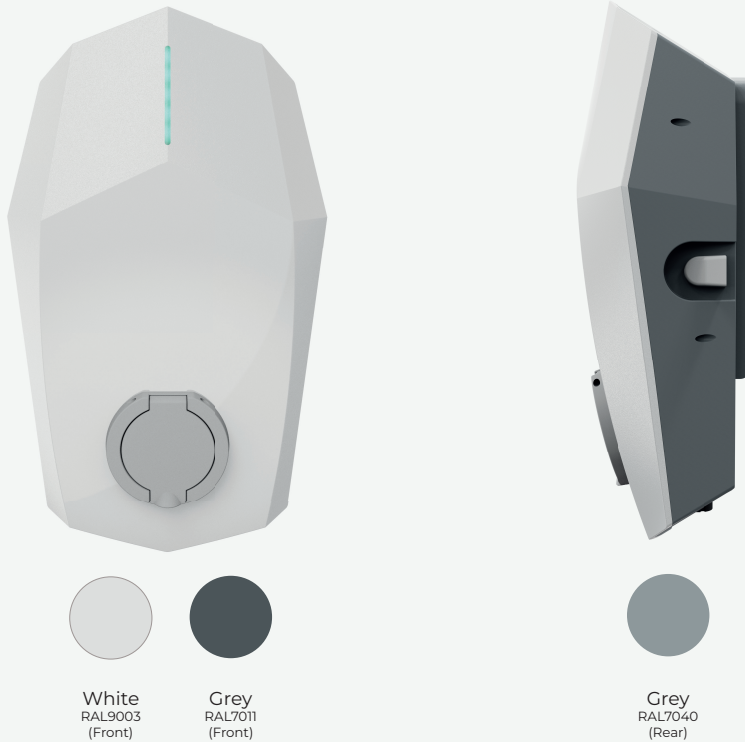
### Upgrades

Source 2 is upgradeable to include an MID meter, mobile internet through eSIM, WiFi and Power Sharing.

### Installation

Source 2 is completely connected through external interfaces, eliminating the need to ever open the charger and allowing for the preparation of future installations.





## Technical details

### Dimensions (HxWxD)

440 x 270 x 140 mm

### Weight

±3KG (Fixed cable ±5KG)

### Charge capacity

1-phase or 3-phase, 6-32A (1.4-22.17kW)\*

### Charging cable

Type-2 socket (IEC 62196-2)  
Fixed Cable Type 2 (6.5m standard)

### Communication protocol

OCPP1.6J-2.0.1  
MQTT (over VT Cloud)\*\*  
Matter (over VT Cloud)\*\*

### Available data inputs

RJ12 (Volt Time CT Module)  
RJ45 (Ethernet/LAN)

### User Interface

User App & Installer App  
LED RGB  
Piezo buzzer

### Connectivity

Ethernet  
Optional: LTE-M 4G  
Optional: GPRS  
Optional: WiFi 2.4GHz

### kWh measurement

Integrated meter  
Optional: MID 2014/32/EU Certified (<1%)

### Grid Type

TN, TT, IT

### Identification

RFID Mifare 13.56MHz  
Autostart

### Power connection

Installation connector (up to 6mm<sup>2</sup> solid or stranded, 8-21mm outer diameter)  
Alternative cable entry at the rear (up to 10mm<sup>2</sup> solid or stranded, 14-21mm outer diameter)

### Protection

Integrated overload protection according to IEC61851-1:2019  
Built-in 6mA DC RDC-DD according to IEC-62955  
IP54 according to IEC-60529  
IK08 impact resistance according to IEC-62262  
Insulation class 1  
Overvoltage category III  
PEN Detection (UK)

### Operating conditions

Temperature -25°C to +40°C  
Humidity 5% to 95%

### Stand-by consumption

5W

### Advised mounting height

1 meter above ground

### Complied standards

2014/53/EU Radio Equipment Directive  
2011/65/EU Restriction of Hazardous Materials  
2014/30/EU Electromagnetic Compatibility  
2014/35/EU Low Voltage Directive

\* The maximum output depends on factors such as local regulations, site capacity, solar panels, temperature and cable/car type.

\*\* Ready from Q1-2024



## Installation Process

Source 2 has been designed to simplify the installation. Now you can install a Volt Time in just minutes, saving on time and money significantly. Through the use of dedicated ports for communication and power supply, the charger is ready to be mounted straight out of the box. Preconfiguration is even made possible through accompanying software.

## Installation

### Plug & Play

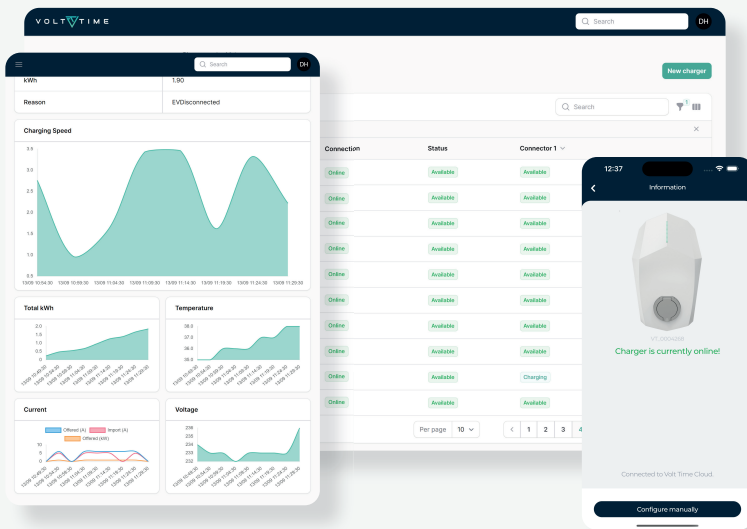
Everything in the charger is preassembled, which means the charger doesn't need to be opened for installation or even troubleshooting. Simply mount Source 2 to a wall or on a pole and you are ready to go. This means you can even prepare installations beforehand, by preparing by using the Installation Ready Kit before the charger even arrives.

### Installer App

Configure your charger in under a minute with the Installer App. Simply enter the charger's serial number and PIN, and you're in! Choose between Auto Config (if available), copying an existing charger's configuration, or manual configuration in 5 easy steps.

The Installer App connects to the chargers over the cloud, which allows for remote troubleshooting or configuration. This means you can also prepare and preconfigure before installing.

The App is equipped with automatic site acceptance testing capabilities, deployment documentation, and can automatically add chargers to the installer's Cloud account for troubleshooting.



## Volt Time App

The Volt Time App, the free companion to your charger. Enable and adjust all smart functionalities with a simple press of a button.

### Boost

Activate the fastest way to charge your vehicle. Through intelligent and dynamic Load Balancing, Source 2 will pull maximum available power from the grid. This way, your car will be charged to the fullest within no time.

### Smart Solar

Charge most efficiently and save thousands! The charger will intelligently measure the solar power generated, and use the excess power to charge your car. If this amount is less than 6A, the rest will be taken from the grid.

### Solar Only

Charge exclusively using solar power. The charger will measure the total generated solar power, minus power used by the rest of the house, and use the remainder for charging. When the availability sinks below 6A, for example on cloudy days, or when other appliances use a large amount, the charger will pause until more power is available. In this mode, no grid power will be used.

